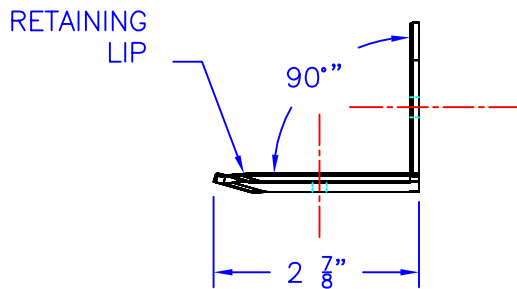
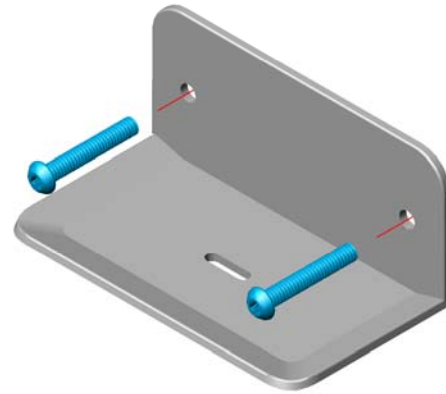
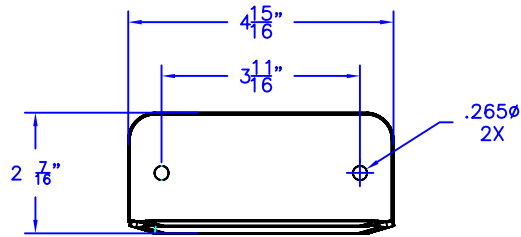




Technical Data S-4010-SS

EXPOSED SURFACE MOUNT SOAP DISH



Construction:

- STAINLESS STEEL CONSTRUCTION WITH #4 SATIN FINISH
- 11 GA. (.120) THICK
- FORMED ONE PIECE WITH SOAP RETAINING LIP TO HOLD SOAP
- (2) .265 ϕ MTG. HOLES
- SUPPLIED WITH (2) $\frac{1}{4}$ "-20 X 1 $\frac{1}{2}$ " PIN IN TORX SECURITY MACHINE SCREWS

Operation:

- SINGLE BAR SOAP HOLDER WITH DRAIN SLOT
- FASTEN AT DESIRED HEIGHT

Installation:

- EXPOSED MOUNT
- FASTEN AT DESIRED HEIGHT
- .265 ϕ MTG. HOLES PROVIDED WITH $\frac{1}{4}$ "-20 X 1 $\frac{1}{2}$ " PIN IN TORX SECURITY SCREWS
- DRIVER NOT INCLUDED
- WALL ANCHORS NOT PROVIDED

Guide Specification:

- STAINLESS STEEL CONSTRUCTION WITH #4 SATIN FINISH
- 11 GA. (.120) THICK
- FORMED ONE PIECE WITH SOAP RETAINING LIP TO HOLD SOAP
- (2) .265 ϕ MTG. HOLES
- SUPPLIED WITH (2) $\frac{1}{4}$ "-20 X 1 $\frac{1}{2}$ " PIN IN TORX SECURITY MACHINE SCREWS